



**CALL NO. 400**

**CONTRACT ID. 212954**

**OHIO COUNTY**

**FED/STATE PROJECT NUMBER 092GR21M005 - FD04**

**DESCRIPTION WESTERN KENTUCKY PARKWAY (WK 9001)**

**WORK TYPE BRIDGE PAINTING & CLEANING**

**PRIMARY COMPLETION DATE 11/15/2021**

**LETTING DATE: April 23,2021**

Sealed Bids will be received electronically through the Bid Express bidding service until 10:00 am EASTERN DAYLIGHT TIME April 23,2021. Bids will be publicly announced at 10:00 am EASTERN DAYLIGHT TIME.

**NO PLANS ASSOCIATED WITH THIS PROJECT.**

**REQUIRED BID PROPOSAL GUARANTY:** Not less than 5% of the total bid.

**TABLE OF CONTENTS**

PART I	SCOPE OF WORK <ul style="list-style-type: none"><li>• PROJECT(S), COMPLETION DATE(S), &amp; LIQUIDATED DAMAGES</li><li>• CONTRACT NOTES</li><li>• STATE CONTRACT NOTES</li><li>• SPECIAL NOTE(S) APPLICABLE TO PROJECT</li><li>• MATERIAL SUMMARY</li><li>• BRIDGE DRAWINGS</li></ul>
PART II	SPECIFICATIONS AND STANDARD DRAWINGS <ul style="list-style-type: none"><li>• SPECIFICATIONS REFERENCE</li><li>• SUPPLEMENTAL SPECIFICATION</li><li>• STANDARD DRAWINGS THAT APPLY</li></ul>
PART III	EMPLOYMENT, WAGE AND RECORD REQUIREMENTS <ul style="list-style-type: none"><li>• LABOR AND WAGE REQUIREMENTS</li><li>• EXECUTIVE BRANCH CODE OF ETHICS</li><li>• KENTUCKY EQUAL EMPLOYMENT OPPORTUNITY ACT OF 1978 LOCALITY / STATE</li><li>• PROJECT WAGE RATES / STATE FUNDED</li></ul>
PART IV	INSURANCE
PART V	BID ITEMS

**PART I**

**SCOPE OF WORK**

ADMINISTRATIVE DISTRICT - 02

CONTRACT ID - 212954

092GR21M005 - FD04

COUNTY - OHIO

PCN - MB09290012101

FD04 092 9001 B00072L 76.77

WESTERN KENTUCKY PARKWAY (WK 9001) BRIDGE 092B0067L OVER W.H. NATCHER PARKWAY (WN 9007) AT  
MP 76.77BRIDGE PAINTING & CLEANING SYP NO. 02-10060.00.  
GEOGRAPHIC COORDINATES LATITUDE 37:23:05.00 LONGITUDE 86:48:33.00

PCN - MB09290012102

FD04 092 9001 B00072R 76.77

WESTERN KENTUCKY PARKWAY (WK 9001) BRIDGE 092B0067R OVER W.H. NATCHER PARKWAY (WN 9007) AT  
MP 76.77BRIDGE PAINTING & CLEANING SYP NO. 02-10060.00.  
GEOGRAPHIC COORDINATES LATITUDE 37:23:05.00 LONGITUDE 86:48:33.00

COMPLETION DATE(S):

COMPLETED BY 11/15/2021                      APPLIES TO ENTIRE PROJECT

## **CONTRACT NOTES**

### **PROPOSAL ADDENDA**

All addenda to this proposal must be applied when calculating bid and certified in the bid packet submitted to the Kentucky Department of Highways. Failure to use the correct and most recent addenda may result in the bid being rejected.

### **BID SUBMITTAL**

Bidder must use the Department's electronic bidding software. The Bidder must download the bid file located on the Bid Express website ([www.bidx.com](http://www.bidx.com)) to prepare a bid packet for submission to the Department. The bidder must submit electronically using Bid Express.

### **JOINT VENTURE BIDDING**

Joint venture bidding is permissible. All companies in the joint venture must be prequalified in one of the work types in the Qualifications for Bidders for the project. The bidders must get a vendor ID for the joint venture from the Division of Construction Procurement and register the joint venture as a bidder on the project. Also, the joint venture must obtain a digital ID from Bid Express to submit a bid. A joint bid bond of 5% may be submitted for both companies or each company may submit a separate bond of 5%.

### **UNDERGROUND FACILITY DAMAGE PROTECTION**

The contractor shall make every effort to protect underground facilities from damage as prescribed in the Underground Facility Damage Protection Act of 1994, Kentucky Revised Statute KRS 367.4901 to 367.4917. It is the contractor's responsibility to determine and take steps necessary to be in compliance with federal and state damage prevention directives. When prescribed in said directives, the contractor shall submit Excavation Locate Requests to the Kentucky Contact Center (KY811) via web ticket entry. The submission of this request does not relieve the contractor from the responsibility of contacting non-member facility owners, whom shall be contacted through their individual Protection Notification Center. Non-compliance with these directives can result in the enforcement of penalties.

### **REGISTRATION WITH THE SECRETARY OF STATE BY A FOREIGN ENTITY**

Pursuant to KRS 176.085(1)(b), an agency, department, office, or political subdivision of the Commonwealth of Kentucky shall not award a state contract to a person that is a foreign entity required by [KRS 14A.9-010](#) to obtain a certificate of authority to transact business in the Commonwealth ("certificate") from the Secretary of State under [KRS 14A.9-030](#) unless the person produces the certificate within fourteen (14) days of the bid or proposal opening. If the foreign entity is not required to obtain a certificate as provided in [KRS 14A.9-010](#), the foreign entity should identify the applicable exception. Foreign entity is defined within [KRS 14A.1-070](#).

**For all foreign entities required to obtain a certificate of authority to transact business in the Commonwealth, if a copy of the certificate is not received by the contracting agency within the time frame identified above, the foreign entity's solicitation response shall be deemed non-responsive or the awarded contract shall be cancelled.**

Businesses can register with the Secretary of State at <https://secure.kentucky.gov/sos/ftbr/welcome.aspx>.

### **SPECIAL NOTE FOR PROJECT QUESTIONS DURING ADVERTISEMENT**

Questions about projects during the advertisement should be submitted in writing to the Division of Construction Procurement. This may be done by fax (502) 564-7299 or email to [kytc.projectquestions@ky.gov](mailto:kytc.projectquestions@ky.gov). The Department will attempt to answer all submitted questions. The Department reserves the right not to answer if the question is not pertinent or does not aid in clarifying the project intent.

The deadline for posting answers will be 3:00 pm Eastern Daylight Time, the day preceding the Letting. Questions may be submitted until this deadline with the understanding that the later a question is submitted, the less likely an answer will be able to be provided.

The questions and answers will be posted for each Letting under the heading "Questions & Answers" on the Construction Procurement website ([www.transportation.ky.gov/contract](http://www.transportation.ky.gov/contract)). The answers provided shall be considered part of this Special Note and, in case of a discrepancy, will govern over all other bidding documents.

### **HARDWOOD REMOVAL RESTRICTIONS**

The US Department of Agriculture has imposed a quarantine in Kentucky and several surrounding states, to prevent the spread of an invasive insect, the emerald ash borer. Hardwood cut in conjunction with the project may not be removed from the state. Chipping or burning on site is the preferred method of disposal.

### **INSTRUCTIONS FOR EXCESS MATERIAL SITES AND BORROW SITES**

Identification of excess material sites and borrow sites shall be the responsibility of the Contractor. The Contractor shall be responsible for compliance with all applicable state and federal laws and may wish to consult with the US Fish and Wildlife Service to seek protection under Section 10 of the Endangered Species Act for these activities.

### **ACCESS TO RECORDS**

The contractor, as defined in KRS 45A.030 (9) agrees that the contracting agency, the Finance and Administration Cabinet, the Auditor of Public Accounts, and the Legislative Research Commission, or their duly authorized representatives, shall have access to any books, documents, papers, records, or other evidence, which are directly pertinent to this contract for the purpose of financial audit or program review. Records and other prequalification information confidentially

disclosed as part of the bid process shall not be deemed as directly pertinent to the contract and shall be exempt from disclosure as provided in KRS 61.878(1)(c). The contractor also recognizes that any books, documents, papers, records, or other evidence, received during a financial audit or program review shall be subject to the Kentucky Open Records Act, KRS 61.870 to 61.884.

In the event of a dispute between the contractor and the contracting agency, Attorney General, or the Auditor of Public Accounts over documents that are eligible for production and review, the Finance and Administration Cabinet shall review the dispute and issue a determination, in accordance with Secretary's Order 11-004.

April 30, 2018

## **SPECIAL NOTE FOR RECIPROCAL PREFERENCE**

### **RECIPROCAL PREFERENCE TO BE GIVEN BY PUBLIC AGENCIES TO RESIDENT BIDDERS**

By reference, KRS 45A.490 to 45A.494 are incorporated herein and in compliance regarding the bidders residency. Bidders who want to claim resident bidder status should complete the Affidavit for Claiming Resident Bidder Status along with their bid in the electronic bidding software. Submittal of the Affidavit should be done along the bid in Bid Express.

April 30, 2018



**SPECIAL NOTES  
DISTRICT NO. 2  
BRIDGE CLEANING AND PAINTING  
OHIO COUNTY  
CID212954 ~ 092GR21M005 ~ SYP ITEM NO. 2-10060**

**FD04 092 9001 B00072L 76.77**

Ohio County ~ WK 9001 WB (Western Kentucky Parkway) over I-165

***Geographic Coordinates***

Latitude – 37° 23’ 05.00’’

Longitude – 086° 48’ 33.00’’

**Description**

52’-71’-71’-52’ Steel Girder Spans, Drawing No. 18094

**FD04 092 9001 B00072R 76.77**

Ohio County ~ WK 9001 EB (Western Kentucky Parkway) over I-165

***Geographic Coordinates***

Latitude – 37° 23’ 04.00’’

Longitude – 086° 48’ 33.00’’

**Description**

52’-71’-71’-52’ Steel Girder Spans, Drawing No. 18094

**SPECIAL NOTES FOR BRIDGE CLEANING AND PAINTING**

SPECIAL NOTE FOR BIDDING PREQUALIFICATION AND STAFFING

SPECIAL NOTE BRIDGE CLEANING AND PAINTING

SPECIAL NOTE FOR PREVENTIVE MAINTENANCE

SPECIAL NOTE FOR BEARING REPLACEMENT

SPECIAL NOTE FOR UTILITIES AND SIGNS

SPECIAL NOTE FOR WEIGHT LIMITS ON STRUCTURE

SPECIAL NOTE FOR MAINTAINING AND CONTROLLING TRAFFIC

### **SPECIAL NOTE FOR BIDDING PREQUALIFICATION AND STAFFING**

Bidders shall be Pre-qualified under I18B – Bridge Painting to have a bid opened and read.

The contractor(s) and or subcontractor(s) performing painting operations shall retain staff meeting the requirements listed below for the duration of this contract. Any production work conducted while not meeting these requirements shall not be eligible for payment. The contractor(s) and or subcontractor(s) performing painting operations personnel shall have been directly responsible for field operations of a structure painting project containing the requirements listed below.

1. A structure over a river or having multiple structures (more than three)
2. Having specific containment requirements
3. Maintaining vehicular traffic.

The projects shall have been completed to the facility owners' satisfaction.

The Contractor(s) and or Subcontractor(s) performing the repair operations required in this contract (not paint related) shall be Pre-qualified for appropriate work items.

## **SPECIAL NOTE BRIDGE CLEANING AND PAINTING**

### **1. DESCRIPTION.**

Perform all work in accordance with the Kentucky Transportation Cabinet, Department of Highway's Standard Specifications for Road and Bridge Construction and applicable Supplemental Specifications, the Standard Drawings, (current editions), this Note and Attached Detailed Drawings. Section references are to the Standard Specifications. This work consists of the following: (1) Furnish all labor, materials, tools, and equipment, (2) Cleaning and Painting and (3) Any other work specified as part of this contract.

### **2. CONSTRUCTION.**

All structural steel shall be cleaned and painted in accordance with the Kentucky Transportation Cabinet, Department of Highways Standard Specifications for Road and Bridge Construction (current edition) Section 614.

All structural steel shall be Abrasive Blast Cleaned and Painted. See Section 614.03.09 for Abrasive Blast Cleaning and Painting.

### **3. RECYCABLE MATERIAL.**

Contrary to Section 614.03.09 section 5 transport and recycling the Contractor shall send all recyclable debris and complete their supplier profile form to the recycler listed below instead of the supplier profile form from the Division of Construction's website given.

The recycler is: The Doe Run Company: Resource Recycling Division, HC1 Box 1395, HWY 10K, Boss, MO 65440, phone (573) 626-4813, fax (573) 626-3304, email [www.doerun.com](http://www.doerun.com). The contractor will complete the Doe Run Supplier Profile Form and provide copies of it to both Doe Run and the Engineer prior to transporting the surface preparation debris.

### **4. SEQUENCING**

All work required for the bearing replacement specified in this proposal must be completed prior to any cleaning and painting production operations commence.

### **5. PRIMER FOR BEARING REPLACEMENT**

The primer required for the faying surfaces in the repair specification shall be from the Class I paint system listed on the Division of Material's list of approved products.

### **6. DAMAGE TO STRUCTURE.**

The Contractor shall bear all responsibility and expense for any and all damage to the structure during the painting work, even to the removal and replacement of a fallen span, should the fallen span result from the Contractors actions.

## **SPECIAL NOTE FOR PREVENTIVE MAINTENANCE**

### **1. DESCRIPTION.**

Perform all work in accordance with the Kentucky Transportation Cabinet, Department of Highway's Standard Specifications for Road and Bridge Construction and applicable Supplemental Specifications, the Standard Drawings, (current editions), this Note and Attached Detailed Drawings. Section references are to the Standard Specifications. This work consists of the following: (1) Furnish all labor, materials, tools, and equipment, (2) Bridge Cleaning, (3) Concrete Coatings and (4) Any other work specified as part of this contract.

### **2. MATERIALS.**

#### **A. Wash Water**

Use clean potable water for all pressure washing.

#### **B. Concrete Coatings**

See The Division of Material's list of approved materials for concrete coatings and Section 821.

### **3. CONSTRUCTION.**

#### **A. Bridge Cleaning.**

All debris shall be removed from the bridge components. See attached detailed drawings for each bridge addressing components having debris removal. Equipment for removing debris from the bridge components shall be determined by the Contractor, subject to the approval of the Engineer. The Contractor shall prevent any debris from entering any body of water, bridge drainage system, or traffic lanes. All debris removed shall be disposed of in a suitable off-site disposal facility. Prior to all cleaning work, the Contractor shall confirm that any bridge drainage system is not blocked by un-removable debris. A blocked drainage system is considered to be one from which debris cannot be removed using the means specified in this note. If the Engineer has been notified, and concurs that the drainage system is blocked prior to performing other cleaning work, then proceed at the direction of the engineer. If the Contractor does not inspect the bridge drainage system and notify the engineer prior to beginning work any blocked drains will be considered to be the result of the Contractor's operations, and all clearing and cleaning of the drainage system shall be done as part of the work of the specification. All vegetation present at areas of the bridge that are to be addressed in this proposal shall be removed as determined by the Engineer.

**All cost to complete Debris Removal, Clean Deck Drains and Remove Vegetation shall as specified shall be included in the Lump Sum price for "Bridge Cleaning".**

**B. Pressure Washing.**

Specified bridge components shall be pressure washed. See attached detailed drawings for each bridge addressing components to be pressure washed. All equipment for pressure washing shall be operated at a minimum pressure of up 4,000 psi with 0 degree spinner tip and/or fan tips as determined by the engineer at the working location with a minimum flow rate of 3.5 gal/minute provided that these pressures do not damage any components of the structure. Pressure and flow rates shall be reduced to a level satisfactory to the Engineer should any damage occur due to power washing procedures. Pressure washing shall be operated at distance of approximately six inches from and perpendicular to the surface. All pressure washing wands shall be equipped with a gauge to accurately determine the amount pressure used. Pressure washing of any bridge element will proceed from top of wash area to bottom of wash area. Wash water will not be released to a bridge element previously washed. Perform all pressure washing at temperatures above 40 degrees Fahrenheit.

**All cost to complete Pressure Washing as specified shall be included in the Lump Sum price for "Bridge Cleaning".**

**C. Concrete Coatings Application.**

Specified bridge components shall have concrete coating applied to as specified after debris removal and power washing. See attached detailed drawings for addressing the bridge components. Use compressed air to remove any loose debris from the surfaces that are to be coated after power washing. See concrete coating diagram.

All coatings shall be applied within manufacturers recommended dry film thickness range. For recommended conditions for application, see Section 614.03.02 and coatings supplier specifications. Allow the surfaces to be coated to dry before any coating is applied. The coating must be applied to a clean and dry surface. All coating application shall be executed using brushes, rollers, etc. No spray application will be permitted.

The Department requires acceptance testing of samples obtained on a per-lot basis per-shipment. The Division of Materials will perform acceptance testing. See Section 821.04.

The finish coat shall be Light Gray for Concrete. See Section 821.02.

**All cost to complete Concrete Coating Application as specified shall be included in the Lump Sum price for "Concrete Coatings".**

**D. Sequence of Work.**

Complete work in the sequence listed below:

1. Debris Removal
2. Pressure Washing
3. Concrete Coating Application

**E. Inspection.**

The Cabinet will provide inspection for all items required in this contract. Visual inspection will be required upon completion of each work item for each structure component or at the discretion of the Engineer at any time. All visual inspection shall be performed within arm's length distance.

**1. Debris Removal:** Visual Inspection.

**2. Power Washing:** Visual Inspection.

**3. Concrete Coating:**

Prime Coat Application Check for wet film thickness\*, and defects in the Paint.

Finish Coat Application Check for wet film thickness\*, paint appearance, color and quality of application.

**F. Verifying Field Conditions.**

The Contractor shall be familiar with all conditions at each bridge site. The Cabinet will not consider any claims due to the Contractor having not familiarized themselves with requirements of this work.

**G. Residual Lead.**

Residual lead paint may still be on bridge. The Contractor is advised to take all necessary protective measures including worker safety and environmental regulations when performing surface preparation. The Department will not consider any claims based on residual lead paint.

**H. Damage to the structure.**

The Contractor shall bear all responsibility and expense for any and all damage to the structure during the repair work, even to the removal and replacement of a fallen span, should the fallen span result from the contractors actions.

**4. MEASUREMENT.**

**A. Bridge Cleaning.**

The Cabinet will measure this item by Lump Sum, completed and accepted.

**B. Concrete Coating.**

The Cabinet will measure this item by Lump Sum, completed and accepted.

**5. PAYMENT**

**A. Bridge Cleaning (24981EC).**

Payment at the contract unit price for "Lump Sum" is full compensation for Debris Removal, Deck Drain Cleaning, Pressure Washing and all incidental items required to complete this with as specified in this note and attached detailed drawings.

**B. Concrete Coating (24982EC).**

Payment at the contract unit price for "Lump Sum" is full compensation for applying the concrete coatings and all incidental items required to complete this work as specified in this note and attached detailed drawings.

## SPECIAL NOTE FOR BEARING REPLACEMENT

**1. DESCRIPTION.** Perform all work in accordance with the Kentucky Transportation Cabinet, Department of Highway's Standard Specifications for Road and Bridge Construction and applicable Supplemental Specifications, the Standard Drawings (current editions), this note, and the attached detailed drawings for Bearing Replacement. Section references are to the Standard Specifications. This work consists of the following: (1) Furnish all labor, materials, tools, and equipment. (2) Bearing Replacement. (3) Jack and Support Bridge Span. (4) Any other work specified as part of this contract.

**2. MATERIALS.**

- A. Structural Steel.** ASTM Material, A709 Grade 50 Structural Steel Plates and Shapes. Minimum structural steel yield strength  $F_y \sim 50,000$  psi.
- B. Welding.** Welding and weld materials are to be in accordance with the Standard Specifications Sections 106, 813 and 607 and unless otherwise noted.
- C. Elastomeric Bearings Pads.** Type 4E Elastomeric Bearing Pad see Standard Drawing BBP-001 C.E. and the attached detailed drawings.
- D. Anchor Bolts.** All anchor connections shall be ASTM F1554 Grade 55 Swedged 1 1/4" diameter high strength anchor bolts, nuts, and washers.
- E. Grout.** See Section 601.
- F. Cleaning and Painting.** See Special Note for Bridge Cleaning and Painting.

**3. CONSTRUCTION.**

- A. Bearing Replacement.** Complete bearing replacement and bearing stiffener repair as specified in this special note and shown in the attached detailed drawings. All bearing stiffener repairs shall be completed prior to beginning the bearing replacements. The bearing stiffener may be replaced in its entirety at no addition cost at the Contractor's option.
- B. Removal.** Remove existing bearings and portion of bearing stiffeners as shown on the attached detailed drawings. Dispose of all removed material entirely away from the job site. This work shall be incidental to the unit price bid "Each" for "Bearing Replacement".
- C. Expansion Anchors.** For anchor bolt installation see Section 511 of the Standard Specifications and the attached detailed drawings.
- D. Bearing Pads.** Set bearing pads in accordance with Section 607.03.17 of the Standard Specification.
- E. Jack and Support Bridge Span.** Jack and Support the beams under full dead and live loads while replacing the bearings. Total service loads are 130 kips per beam line. A Jack capacity of 130 Tons or greater at 200% per beam line shall be required. The Contractor shall submit a jack and support plan to the Engineer for approval. **This plan must be prepared, signed and stamped by a licensed Kentucky professional engineer.**



**F. Cleaning and Painting.**

**Existing Steel.** All existing faying surfaces where new steel is to be installed shall be cleaned and receive the prime coat as specified in Special Note for Bridge Cleaning and Painting. Level of cleaning shall be to an **SSPC-SP 15** (Commercial Grade Power Tool Cleaning). All Power tools shall be equipped with vacuum shrouds and fitted with HEPA filters at their air exhausts. Maintain and operate all vacuum shrouded power tools to collect generated debris.

**New Structural Steel.** All new structural steel shall receive shop surface preparation and shop applied prime coating as specified in Special Note for Bridge Cleaning and Painting. Necessary touch up/repair of the shop applied prime coat on the new steel may be performed in the field. Intermediate and Finish coatings specified shall be field applied.

All items necessary to complete cleaning and painting as specified in this note shall be consider incidental to the unit price bid for Bearing Replacement.

**G. Field Welding.** Field welding will not be permitted except as shown on the detail drawings or as directed by the Engineer.

**H. Residual Lead.** Residual lead paint may still be on bridge. The Contractor is advised to take all necessary protective measures including worker safety and environmental regulations when performing surface preparation and other work. The Department will not consider any claims based on residual lead paint.

**I. Verifying Field Conditions.** The Contractor shall field verify all plate and shape dimensions, bolt patterns and locations before ordering any material. New material that is unsuitable due to variation in existing structure shall be replaced at the Contractors expense.

**J. Damage to the structure.** The Contractor shall bear all responsibility and expense for any and all damage to the structure during the repair work, even to the removal and replacement of a fallen span, should the fallen span result from the Contractors actions.

**4. MEASUREMENT.**

**A. Bearing Replacement.** The Department will measure the quantity as “Each” for Bearing Replacement.

**B. Jack and Support Bridge Span.** The Department will measure the quantity as “Lump Sum” for Jack and Support Bridge Span

**5. PAYMENT.**

**A. Bearing Replacement (21969NN).** Payment at the contract unit price for “Each” is full compensation for furnishing and installing all material as specified.

**B. Jack and Support Bridge Span (08435).** Payment at the contact “Lump Sum” includes all items necessary to jack and support bridge span as specified.

### **SPECIAL NOTE FOR UTILITIES AND SIGNS**

All utilities, traffic signs shall be maintain and protected from damage.

All electric power that may on the structure shall be de-energized. The Contractor shall coordinate with the Department to have the power de-energized.

### **SPECIAL NOTE FOR WEIGHT LIMITS ON STRUCTURE**

**092B00072L** is rated at **51** tons.

**092B00072R** is rated at **53** tons.

No equipment, materials, vehicles, trailers nor combination of thereof exceeding the load rating of each structure listed above shall be placed on or drive across the structure. If the Contractor chooses to stage from the bridge deck he must submit a plan for approval by the KYTC Engineer showing placement and weight of all equipment.

## **SPECIAL NOTE FOR MAINTAIN AND CONTROL TRAFFIC**

All lane closures on this project shall be in accordance with **Kentucky Department of Highways Standard Specifications and Standard Drawings Nos. TTC-115, TTC-135, TTD-120 and the FHWA Manual for Uniform Traffic Control Devices (Current Editions)**. No lane closures will be permitted on holidays or holiday weekends. No work will be conducted over unprotected traffic at any location. The contractor must submit a traffic control plan for review and approval by the KYTC Engineer 14 days prior to the Pre-Construction Conference.

### **1. EMERGENCY REPAIRS AND COORDINATION WITH OTHER CONTRACTS**

In the event it becomes necessary to make emergency repairs at this project by state forces or by other outside contractors, the (painting) contractor agrees to alter his work pattern as directed by the engineer so as not to interfere with the emergency work. The contractor shall be required to coordinate his efforts with those of any other contractor in the construction area.

### **2. TRAFFIC CONTROL DEVICES**

The contractor will be required to furnish all traffic control devices whenever his operations endanger or interfere with vehicular traffic as determined by the engineer. The contractor shall furnish any additional traffic control devices necessary to protect traffic and his workmen. Any costs associated with the added traffic control devices (including arrow boards) shall be incidental to the contract lump sum amount for "maintain and control traffic." Placement of all devices for lane closures shall start and proceed in the direction of flow of traffic. Removal of devices shall start at the end of the construction area and proceed toward oncoming traffic. The contractor shall provide for the installation of all necessary traffic control devices before beginning work and their immediate removal as soon as work is suspended or completed. During the fully operational periods, when no lane closures are permitted, all equipment shall be totally removed from the job site. Traffic control signs shall be removed or covered (if left in a curb lane). **Only barrels shall be used for lane closures. No cones will be permitted.**

### **3. VEHICLES**

The contractor's vehicles shall always move with and not across or against the flow of traffic. Vehicles shall enter or leave work areas in a manner that will not be hazardous to or interfere with normal roadway traffic. Vehicles shall not park or stop except within designated work areas.

Personal vehicles will not be permitted to park within the state right-of-way. The contractor's vehicles will be prohibited from crossing the roadway and all pedestrian movement of the contractor's personnel on the roadway will be limited to within the closed work areas.

### **4. MINIMUM VERTICAL CLEARANCES**

A minimum vertical clearance of **16'-6"** shall be maintained for any rigging and containment materials left in place above traffic. This minimum vertical clearance must be signed. The Contractor shall notify the Cabinet's Department of Motor Vehicle Oversize Permits Section for height and width restrictions when any rigging and containment is in place with minimal clearance.

## **5. ROLLING ROAD BLOCKS**

Rolling roadblocks will be permitted during the hours 9:00 PM to 6:00 AM for rigging and containment installation/removal. When using rolling road blocks the Contractor shall employ one vehicle per lane including ramps as necessary, in one direction at a predetermined time and predetermined speed as directed by the Engineer. There shall be no stopping of the rolling roadblock. Prior to instituting such the roadway ahead shall be cleared of traffic as directed by the Engineer. The area of influence shall be sealed off (all on-ramps or access intersection closed) by use of flaggers and/or Contractor's vehicles. The purpose is to seal off a certain work area and/or work function as designated in the notes so that the Contractor can perform certain work without any hazard to traffic. The rolling roadblock shall prevent any other vehicles at a slower speed than normal and forcing all vehicles to follow behind the Contractor's vehicles at their predetermined speed. Rolling roadblock shall only be used during specified hours as directed by the Engineer. Variable message boards shall be required to be in place with an advanced warning message for the potential queue due to the rolling roadblock. See link below for additional requirements.

### **Kentucky Transportation Cabinet's Permits Branch:**

#### **Form-TC 99-210 Rolling Road Block for Permitted Work Full Controlled Highways**

<https://transportation.ky.gov/OrganizationalResources/Forms/TC%2099-210.pdf>

## **6. EQUIPMENT STAGING IN SHOULDERS AND/OR GORE AREAS**

Equipment staging will be permitted in the shoulders and/or gore areas. Any non-drivable equipment (trailers, recycler, dust collector, compressors etc.) should be located outside of the clear zone. The Contractor shall be responsible for any base material to park equipment on in the median and/or gore areas. This material must be removed and site restored to original condition as directed by the Engineer upon completion of the project.

## **7. TEMPORARY CONCRETE BARRIERS**

Staging in shoulders specified shall require temporary Concrete Barriers 9t (**NO ALTERNATIVES ALLOWED**) shall be used to protect work area in the shoulder closure. All temporary barrier for shoulder closures shall be used in accordance with Standard Drawing TTC-135 C.E. All other applications of temporary barrier shall use required end treatment. If not utilizing end treatment on shoulder, wall that is flared should not drop off with existing shoulder break but should sit on a graded pad in case of impact and vehicle does not hit wall too high. Temporary Concrete Barriers shall remain the Contractor's property and shall be removed from the construction site upon completion of construction. Cost of temporary concrete barrier 9t shall be considered incidental to the "Lump Sum" Bid for Maintain and Control Traffic. The Contractor shall be responsible for any base material to park equipment on. This material must be removed and site restored to original condition as directed by the Engineer upon completion of the project.

## **8. VEHICULAR PLATFORM USE**

Should the use any vehicular platform methods and equipment to complete work with specified maintenance of traffic, the Contractor must submit their deployment plan to the use vehicular platform methods with the required traffic control plan and rigging and containment design submittal.

## **9. TRUCK MOUNTED DC ATTENUATOR**

Any lane or shoulder closure will include the use of a Truck Mounted Attenuator placed between oncoming traffic and equipment or vehicles.

## **10. MISC.**

The Contractor shall reduce the speed limit to **55 MPH**.

The use of Double Fine Zones may be used at the Contractor's discretion.

The Engineer may elect to use Variable Message Boards when necessary.

## **11. NARRATIVE**

Single lane and shoulder closures on WN 9001 (route above) maintaining a 12' driving lane will be permitted for rigging and containment installation **only**.

Single lane and shoulder closures on I-165 (route below) maintaining a 12' driving lane will be permitted for all work. All lane closures must be removed when not working. Shoulder closures will be permitted to remain on I-165 (route below) see Items 6 and 7 in this note.

## **12. MEASUREMENT.**

**A. Maintain and Control Traffic:** The Department will measure the quantity as "Lump Sum".

**B. Portable Changeable Message Sign:** The Department will measure the quantity for "Each".

## **13. PAYMENT.**

**A. Maintain and Control Traffic (02650):** Payment of the contract lump sum amount for "maintain and control traffic" shall be full compensation for all items necessary to maintain and control traffic as specified for this project. All traffic control items shall remain the property of the contractor when the work is complete.

**B. Portable Changeable Message Sign (02671):** Payment at "each" shall be full compensation to furnish, install, maintain and remove all portable message signs as specified.

MATERIAL SUMMARY

CONTRACT ID: 212954

092GR21M005 - FD04

MB09290012101

WESTERN KENTUCKY PARKWAY (WK 9001) BRIDGE 092B0067L OVER W.H. NATCHER PARKWAY (WN 9007)  
AT MP 76.77 BRIDGE PAINTING & CLEANING.

Project Line No	Bid Code	DESCRIPTION	Quantity	Unit
0005	02650	MAINTAIN & CONTROL TRAFFIC - - 092B00072L	1.00	LS
0010	02671	PORTABLE CHANGEABLE MESSAGE SIGN - - 092B00072L	1.00	EACH
0015	08435	JACK & SUPPORT BRIDGE SPAN - - 092B00072L	1.00	LS
0020	08434	CLEAN & PAINT STRUCTURAL STEEL - - 092B00072L	1.00	LS
0025	21969NN	BEARING REPLACEMENT - - 072B00072L	12.00	EACH
0030	24981EC	BRIDGE CLEANING - - 092B00072L	1.00	LS
0035	24982EC	CONCRETE COATING - - 092B00072L	1.00	LS
0040	02568	MOBILIZATION	1.00	LS
0045	02569	DEMOBILIZATION	1.00	LS

CONTRACT ID: 212954

092GR21M005 - FD04

MB09290012102

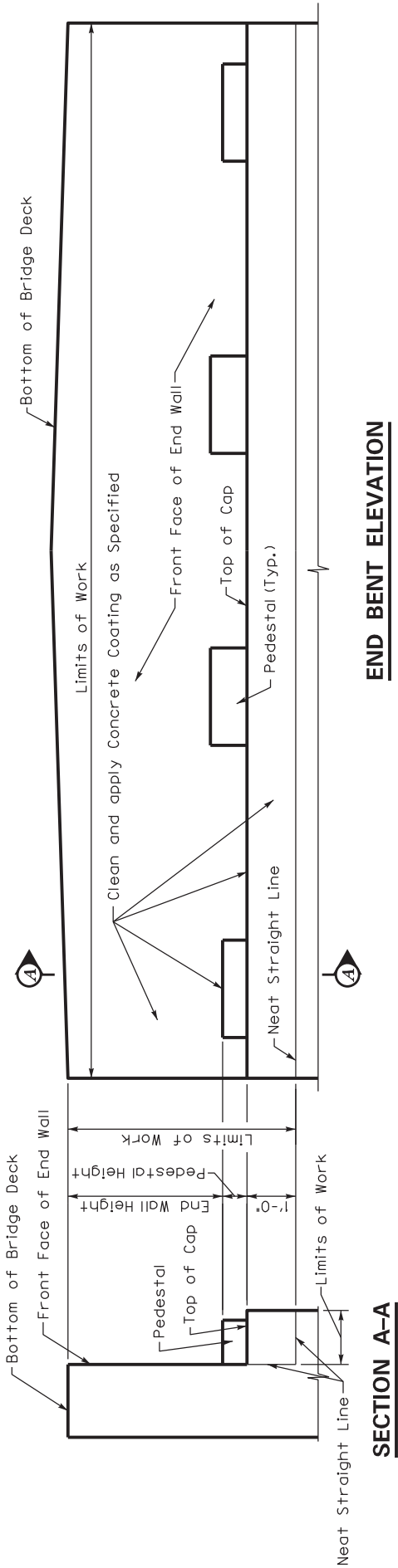
WESTERN KENTUCKY PARKWAY (WK 9001) BRIDGE 092B0067R OVER W.H. NATCHER PARKWAY (WN 9007)  
AT MP 76.77 BRIDGE PAINTING & CLEANING.

Project Line No	Bid Code	DESCRIPTION	Quantity	Unit
0050	02650	MAINTAIN & CONTROL TRAFFIC - - 092B00072R	1.00	LS
0055	02671	PORTABLE CHANGEABLE MESSAGE SIGN - - 092B00072R	1.00	EACH
0060	08435	JACK & SUPPORT BRIDGE SPAN - - 092B00072R	1.00	LS
0065	08434	CLEAN & PAINT STRUCTURAL STEEL - - 092B00072R	1.00	LS
0070	21969NN	BEARING REPLACEMENT - - 072B00072R	12.00	EACH
0075	24981EC	BRIDGE CLEANING - - 092B00072R	1.00	LS
0080	24982EC	CONCRETE COATING - - 092B00072R	1.00	LS
0085	02568	MOBILIZATION	1.00	LS
0090	02569	DEMOBILIZATION	1.00	LS





Note: Clean and apply concrete coatings to the top and face of cap the entire length including cap ends and front face of end bent back wall as specified within the limits shown.



**END BENT ELEVATION**

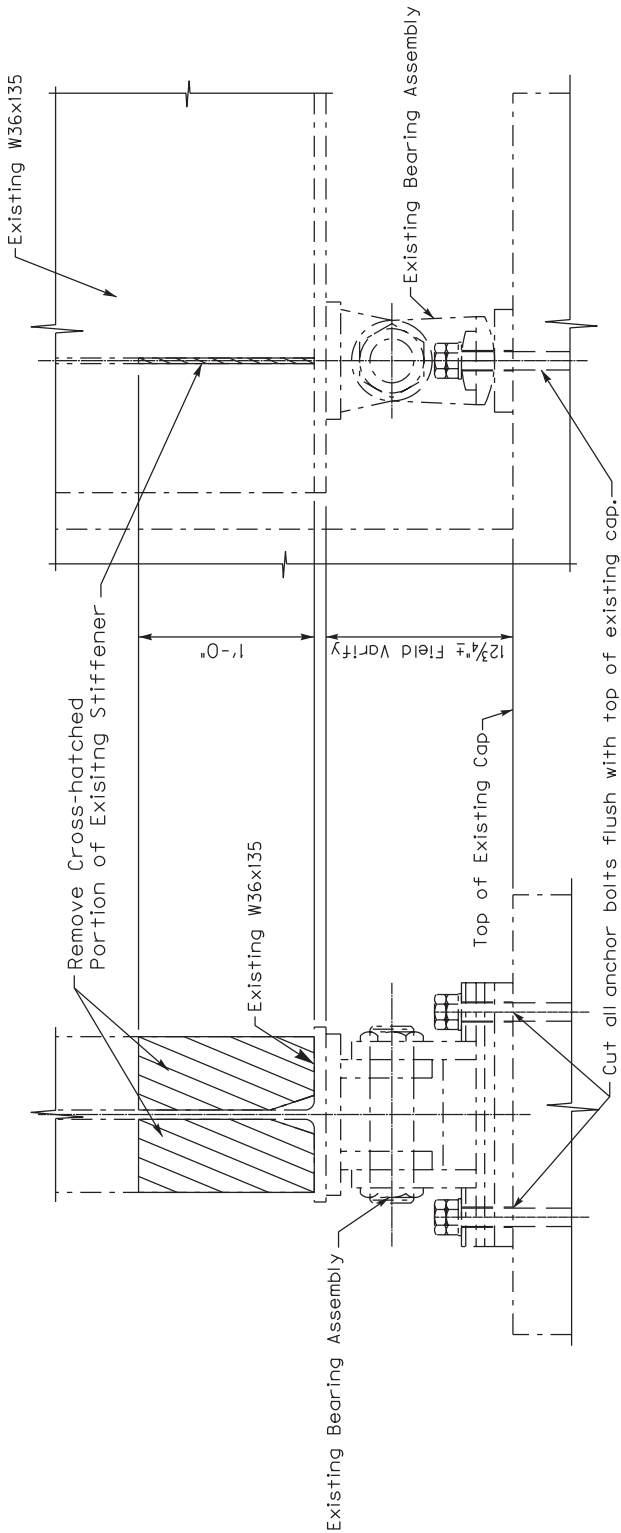
**SECTION A-A**

**BRIDGE NO.**  
092B000072L  
092B000072R

*Note: See Special Note for Preventive Maintenance*

092GR19M033

Commonwealth of Kentucky DEPARTMENT OF HIGHWAYS
COUNTY <b>OHIO</b>
<b>PREVENTIVE MAINTENANCE</b>
PREPARED BY Division of Maintenance Bridge Preservation Branch

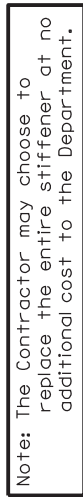


**FRONT ELEVATION**  
(Existing)

**SIDE ELEVATION**  
(Existing)

**BRIDGE NO.**  
092B00072L  
092B00072R

**Note: See Special Note for Bearing Replacement**





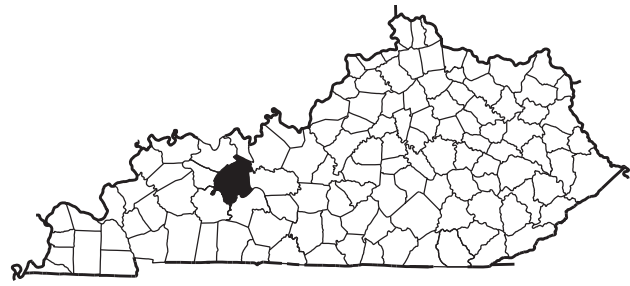
**Note: See Special Note for Bearing Replacement**

Commonwealth of Kentucky	
DEPARTMENT OF HIGHWAYS	
COUNTY	
OHIO	
BEARING REPLACEMENT	
PREPARED BY	
Division of Maintenance	
Bridge Preservation Branch	



FE02 092 9001 B00072L & R  
WK 9001 WB over WN 9007

**LOCATION MAP ~ OHIO COUNTY**



092GR19M033

Commonwealth of Kentucky DEPARTMENT OF HIGHWAYS
OHIO
LOCATION MAP
PREPARED BY Division of Maintenance Bridge Preservation Branch

**PART II**

**SPECIFICATIONS AND STANDARD DRAWINGS**

### **SPECIFICATIONS REFERENCE**

Any reference in the plans or proposal to previous editions of the *Standard Specifications for Road and Bridge Construction* and *Standard Drawings* are superseded by *Standard Specifications for Road and Bridge Construction, Edition of 2019* and *Standard Drawings, Edition of 2020*.

## **SUPPLEMENTAL SPECIFICATIONS**

The contractor shall use the Supplemental Specifications that are effective at the time of letting.  
The Supplemental Specifications can be found at the following link:

<http://transportation.ky.gov/Construction/Pages/Kentucky-Standard-Specifications.aspx>



**STANDARD DRAWINGS THAT APPLY**

**TRAFFIC  
~ *TEMPORARY* ~  
TRAFFIC CONTROL**

LANE CLOSURE MULTI-LANE HIGHWAY CASE I  
SHOULDER CLOSURE  
DOUBLE FINE ZONES

TTC-115 C.E.  
TTC-135 C.E.  
TTD-120 C.E.

**BRIDGES**

**MISCELLANEOUS STANDARDS**

ELASTOMERIC BEARING PADS FOR PRESTRESS BEAMS

BBP-110 C.E.

## **PART III**

### **EMPLOYMENT, WAGE AND RECORD REQUIREMENTS**

**TRANSPORTATION CABINET  
DEPARTMENT OF HIGHWAYS**

**LABOR AND WAGE REQUIREMENTS  
APPLICABLE TO OTHER THAN FEDERAL-AID SYSTEM PROJECTS**

- I. Application
- II. Nondiscrimination of Employees (KRS 344)

**I. APPLICATION**

1. These contract provisions shall apply to all work performed on the contract by the contractor with his own organization and with the assistance of workmen under his immediate superintendence and to all work performed on the contract by piecework, station work or by subcontract. The contractor's organization shall be construed to include only workmen employed and paid directly by the contractor and equipment owned or rented by him, with or without operators.

2. The contractor shall insert in each of his subcontracts all of the stipulations contained in these Required Provisions and such other stipulations as may be required.

3. A breach of any of the stipulations contained in these Required Provisions may be grounds for termination of the contract.

3. If the contractor is in control of apprenticeship or other training or retraining, including on-the-job training programs, he shall not discriminate against an individual because of his race, color, religion, national origin, sex, disability or age forty (40) and over, in admission to, or employment in any program established to provide apprenticeship or other training.

4. The contractor will send to each labor union or representative of workers with which he has a collective bargaining agreement or other contract or understanding, a notice to be provided advising the said labor union or workers' representative of the contractor's commitments under this section, and shall post copies of the notice in conspicuous places available to employees and applicants for employment. The contractor will take such action with respect to any subcontract or purchase order as the administering agency may direct as a means of enforcing such provisions, including sanctions for non-compliance.

Revised: January 25, 2017

**II. NONDISCRIMINATION OF EMPLOYEES**

**AN ACT OF THE KENTUCKY  
GENERAL ASSEMBLY TO PREVENT  
DISCRIMINATION IN EMPLOYMENT  
KRS CHAPTER 344  
EFFECTIVE JUNE 16, 1972**

The contract on this project, in accordance with KRS Chapter 344, provides that during the performance of this contract, the contractor agrees as follows:

1. The contractor shall not fail or refuse to hire, or shall not discharge any individual, or otherwise discriminate against an individual with respect to his compensation, terms, conditions, or privileges of employment, because of such individual's race, color, religion, national origin, sex, disability or age (forty and above); or limit, segregate, or classify his employees in any way which would deprive or tend to deprive an individual of employment opportunities or otherwise adversely affect his status as an employee, because of such individual's race, color, religion, national origin, sex, disability or age forty (40) and over. The contractor agrees to post in conspicuous places, available to employees and applicants for employment, notices to be provided setting forth the provisions of this nondiscrimination clause.

2. The contractor shall not print or publish or cause to be printed or published a notice or advertisement relating to employment by such an employer or membership in or any classification or referral for employment by the employment agency, indicating any preference, limitation, specification, or discrimination, based on race, color, religion, national origin, sex, or age forty (40) and over, or because the person is a qualified individual with a disability, except that such a notice or advertisement may indicate a preference, limitation, or specification based on religion, national origin, sex, or age forty (40) and over, or because the person is a qualified individual with a disability, when religion, national origin, sex, or age forty (40) and over, or because the person is a qualified individual with a disability, is a bona fide occupational qualification for employment.

## EXECUTIVE BRANCH CODE OF ETHICS

In the 1992 regular legislative session, the General Assembly passed and Governor Brereton Jones signed Senate Bill 63 (codified as KRS 11A), the Executive Branch Code of Ethics, which states, in part:

KRS 11A.040 (7) provides:

No present or former public servant shall, within six (6) months following termination of his office or employment, accept employment, compensation, or other economic benefit from any person or business that contracts or does business with, or is regulated by, the state in matters in which he was directly involved during the last thirty-six (36) months of his tenure. This provision shall not prohibit an individual from returning to the same business, firm, occupation, or profession in which he was involved prior to taking office or beginning his term of employment, or for which he received, prior to his state employment, a professional degree or license, provided that, for a period of six (6) months, he personally refrains from working on any matter in which he was directly involved during the last thirty-six (36) months of his tenure in state government. This subsection shall not prohibit the performance of ministerial functions, including but not limited to filing tax returns, filing applications for permits or licenses, or filing incorporation papers, nor shall it prohibit the former officer or public servant from receiving public funds disbursed through entitlement programs.

KRS 11A.040 (9) states:

A former public servant shall not represent a person or business before a state agency in a matter in which the former public servant was directly involved during the last thirty-six (36) months of his tenure, for a period of one (1) year after the latter of:

- a) The date of leaving office or termination of employment; or
- b) The date the term of office expires to which the public servant was elected.

This law is intended to promote public confidence in the integrity of state government and to declare as public policy the idea that state employees should view their work as a public trust and not as a way to obtain private benefits.

If you have worked for the executive branch of state government within the past six months, you may be subject to the law's prohibitions. The law's applicability may be different if you hold elected office or are contemplating representation of another before a state agency.

Also, if you are affiliated with a firm which does business with the state and which employs former state executive-branch employees, you should be aware that the law may apply to them.

In case of doubt, the law permits you to request an advisory opinion from the Executive Branch Ethics Commission, 3 Fountain Place, Frankfort, Kentucky 40601; telephone (502) 564-7954.

Revised: January 27, 2017

### **Kentucky Equal Employment Opportunity Act of 1978**

The requirements of the Kentucky Equal Employment Opportunity Act of 1978 (KRS 45.560-45.640) shall apply to this Contract. The apparent low Bidder will be required to submit EEO forms to the Division of Construction Procurement, which will then forward to the Finance and Administration Cabinet for review and approval. No award will become effective until all forms are submitted and EEO/CC has certified compliance. The required EEO forms are as follows:

- EEO-1: Employer Information Report
- Affidavit of Intent to Comply
- Employee Data Sheet
- Subcontractor Report

These forms are available on the Finance and Administration's web page under ***Vendor Information, Standard Attachments and General Terms*** at the following address:  
**<https://www.eProcurement.ky.gov>**.

Bidders currently certified as being in compliance by the Finance and Administration Cabinet may submit a copy of their approval letter in lieu of the referenced EEO forms.

For questions or assistance please contact the Finance and Administration Cabinet by email at **[finance.contractcompliance@ky.gov](mailto:finance.contractcompliance@ky.gov)** or by phone at 502-564-2874.

# EMPLOYEE RIGHTS UNDER THE FAIR LABOR STANDARDS ACT

THE UNITED STATES DEPARTMENT OF LABOR WAGE AND HOUR DIVISION

## FEDERAL MINIMUM WAGE

# \$7.25

 PER HOUR

BEGINNING JULY 24, 2009

### OVERTIME PAY

At least  $1\frac{1}{2}$  times your regular rate of pay for all hours worked over 40 in a workweek.

### CHILD LABOR

An employee must be at least **16** years old to work in most non-farm jobs and at least **18** to work in non-farm jobs declared hazardous by the Secretary of Labor.

Youths **14** and **15** years old may work outside school hours in various non-manufacturing, non-mining, non-hazardous jobs under the following conditions:

#### *No more than*

- **3** hours on a school day or **18** hours in a school week;
- **8** hours on a non-school day or **40** hours in a non-school week.

Also, work may not begin before **7 a.m.** or end after **7 p.m.**, except from June 1 through Labor Day, when evening hours are extended to **9 p.m.** Different rules apply in agricultural employment.

### TIP CREDIT

Employers of "tipped employees" must pay a cash wage of at least \$2.13 per hour if they claim a tip credit against their minimum wage obligation. If an employee's tips combined with the employer's cash wage of at least \$2.13 per hour do not equal the minimum hourly wage, the employer must make up the difference. Certain other conditions must also be met.

### ENFORCEMENT

The Department of Labor may recover back wages either administratively or through court action, for the employees that have been underpaid in violation of the law. Violations may result in civil or criminal action.

Employers may be assessed civil money penalties of up to \$1,100 for each willful or repeated violation of the minimum wage or overtime pay provisions of the law and up to \$11,000 for each employee who is the subject of a violation of the Act's child labor provisions. In addition, a civil money penalty of up to \$50,000 may be assessed for each child labor violation that causes the death or serious injury of any minor employee, and such assessments may be doubled, up to \$100,000, when the violations are determined to be willful or repeated. The law also prohibits discriminating against or discharging workers who file a complaint or participate in any proceeding under the Act.

### ADDITIONAL INFORMATION

- Certain occupations and establishments are exempt from the minimum wage and/or overtime pay provisions.
- Special provisions apply to workers in American Samoa and the Commonwealth of the Northern Mariana Islands.
- Some state laws provide greater employee protections; employers must comply with both.
- The law requires employers to display this poster where employees can readily see it.
- Employees under 20 years of age may be paid \$4.25 per hour during their first 90 consecutive calendar days of employment with an employer.
- Certain full-time students, student learners, apprentices, and workers with disabilities may be paid less than the minimum wage under special certificates issued by the Department of Labor.

For additional information:



# 1-866-4-USWAGE

(1-866-487-9243)

TTY: 1-877-889-5627



# WWW.WAGEHOUR.DOL.GOV

U.S. Department of Labor | Wage and Hour Division

## **PART IV**

## **INSURANCE**

Refer to  
*Kentucky Standard Specifications for Road and Bridge Construction,*  
current edition

# **PART V**

## **BID ITEMS**



212954

PROPOSAL BID ITEMS

Report Date 3/26/21

Page 1 of 1

Section: 0001 - BRIDGES

LINE	BID CODE	ALT	DESCRIPTION	QUANTITY	UNIT	UNIT PRIC	FP	AMOUNT
0010	02650		MAINTAIN & CONTROL TRAFFIC - 092B00072L	1.00	LS		\$	
0020	02671		PORTABLE CHANGEABLE MESSAGE SIGN - 092B00072L	1.00	EACH		\$	
0030	08434		CLEAN & PAINT STRUCTURAL STEEL - 092B00072L	1.00	LS		\$	
0040	08435		JACK & SUPPORT BRIDGE SPAN - 092B00072L	1.00	LS		\$	
0050	21969NN		BEARING REPLACEMENT - 072B00072L	12.00	EACH		\$	
0060	24981EC		BRIDGE CLEANING - 092B00072L	1.00	LS		\$	
0070	24982EC		CONCRETE COATING - 092B00072L	1.00	LS		\$	

Section: 0002 - BRIDGES

LINE	BID CODE	ALT	DESCRIPTION	QUANTITY	UNIT	UNIT PRIC	FP	AMOUNT
0080	02650		MAINTAIN & CONTROL TRAFFIC - 092B00072R	1.00	LS		\$	
0090	02671		PORTABLE CHANGEABLE MESSAGE SIGN - 092B00072R	1.00	EACH		\$	
0100	08434		CLEAN & PAINT STRUCTURAL STEEL - 092B00072R	1.00	LS		\$	
0110	08435		JACK & SUPPORT BRIDGE SPAN - 092B00072R	1.00	LS		\$	
0120	21969NN		BEARING REPLACEMENT - 072B00072R	12.00	EACH		\$	
0130	24981EC		BRIDGE CLEANING - 092B00072R	1.00	LS		\$	
0140	24982EC		CONCRETE COATING - 092B00072R	1.00	LS		\$	

Section: 0003 - DEMOB

LINE	BID CODE	ALT	DESCRIPTION	QUANTITY	UNIT	UNIT PRIC	FP	AMOUNT
0150	02568		MOBILIZATION	1.00	LS		\$	
0160	02569		DEMOBILIZATION	1.00	LS		\$	